



2016-2017 School Travel Plan

St. Raphael Catholic Elementary School

Year 3

*Compiled by Armi De Francia
School Travel Planning Facilitator
Green Communities Canada*



Funding provided by:



Insurance
Travel
Roadside
Rewards

© CAA and CAA logo trademarks owned by, and use is authorized by, the Canadian Automobile Association.

The views expressed herein are the views of the Recipient and do not necessarily reflect those of our funders.



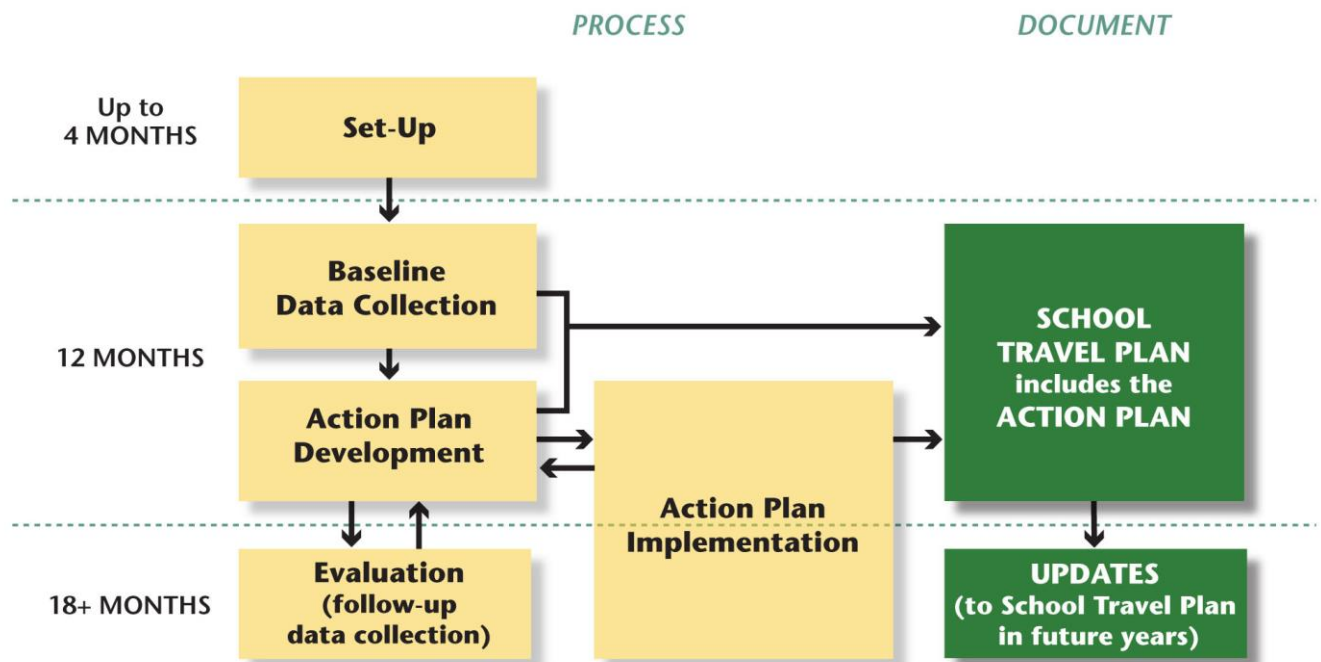
School Travel Plan

Table of Contents

Table of Contents	1
Introduction	1
About School Travel Planning	1
School Travel Planning Feasibility Study for Toronto	3
About the School	4
School Profile	4
Map of area covered by this School Travel Plan	5
Crossing Guards, Traffic Lights, and Sidewalks	6
Goals	7
Travel Challenges Summary	8
Implementation	9
Year 1 STP Progress 2014—2015	9
Year 2 STP Progress 2015—2016	10
Year 3 Completed Action Plan Items	11
Evaluation	12
Classroom Surveys	12
Follow Up Family Survey Findings	14
Members and Endorsement	15
Annual Update	16
Appendix A: Walkabout & Bikeabout Record	17
Appendix B: Action Plan	18
Appendix C: Maps	22
Ward 9 Road Classification Map	22
Land use Map	23
Ward 9 Cycling Network Plan	24
Appendix D: Crossing Guard Request	25
Appendix E: Ideas and Resources	27
Action Plan Ideas:	27
Resources	28

About School Travel Planning

A School Travel Plan is a living document belonging to the school. It will be revisited regularly in order to update the status of Action Plan items and to incorporate future Evaluation findings. It is part of a complete School Travel Planning process that has been successfully developed and implemented across Canada since 2007.



The national *Children’s Health, Mobility and Happiness: A Canadian School Travel Planning Model* project completed in 2012 used Active and Safe Routes to School programming combined with Transportation Demand Management principles to encourage active and sustainable modes of school travel for students, families and staff. The project was designed to address barriers to active travel caused by attitudes and car-dominated design in school neighbourhoods in an effort to reduce the health risk to children. Even before many Action Plan items had been fully implemented, by March 2012 some provinces saw a shift towards active travel of up to 6 per cent and some individual schools saw a shift of over 20 per cent.

Results from STP work between 2014-16 demonstrate that the STP program is a cost-effective intervention.

When effectively coordinated and implemented STP can result in positive school travel behaviour change, and ultimately provide substantial economic, environmental and physical activity benefits.

Green Communities work in Ontario shows that the STP model performs well in a variety of community settings – inner city, inner and outer suburbs, and rural. When travel mode data was combined with the actual costs of delivering STP the results were very encouraging: a benefit cost ratio of 2.4 after one year of implementation.

National Resources

School Travel Planning (STP) is presented by a coalition of organizations across Canada working together to enable more children to walk and cycle to school. Green Communities' Canada Walks makes coordination of efforts and knowledge transfer between and among these organizations possible. This national website provides a wealth of resources with links to international and provincial/territorial organizations and their curriculum, as well as to campaigns that can benefit and complement a school's efforts for health promotion and environmental awareness:

www.saferoutestoschool.ca

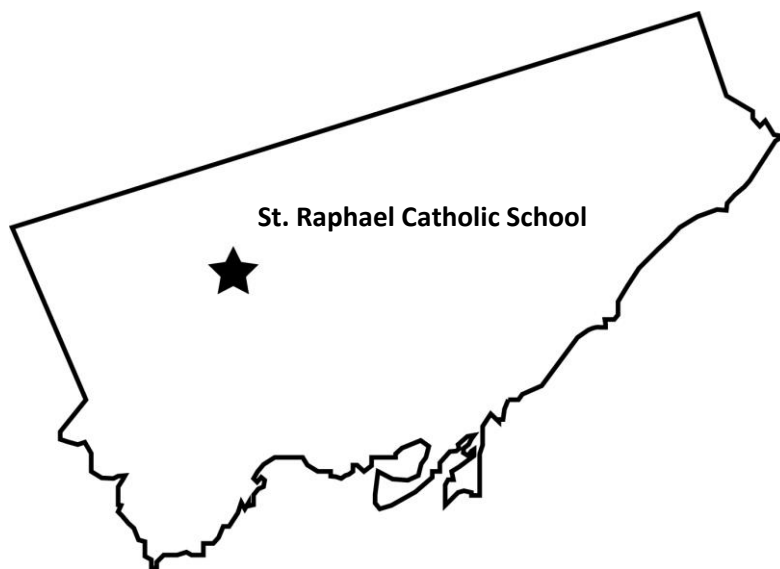
Toolkit resources and flexible templates are available to use in every phase of the STP process. Find the toolkit at:

www.saferoutestoschool.ca/school-travel-planning

School Travel Planning Feasibility Study for Toronto

Background:

St. Raphael CS was a participant in a larger School Travel Planning (STP) feasibility study, taking place over the 2014-2015 and 2015-2016 school years in Toronto and Wellington-Dufferin-Guelph. The initiative was supported by the Ontario Ministry of Education and the Canadian Automobile Association's South Central Ontario region. Additional funding for Toronto was provided by the Heart and Stroke Foundation, through a donation from RioCan, and from the Toronto stakeholders (Toronto District and Toronto Catholic School Boards, City of Toronto Planning and Transportation Services).



St. Raphael is also one of seven elementary schools included in a special addition to the School Travel Planning work, called Project LifeCYCLE. Project LifeCYCLE builds on the School Travel Plan created during the 2014-2015 school year by offering new cycling workshops for classroom education, additional resources for bike rodeos and/or assemblies, the opportunity to hear from young, provincially-competitive cyclists, and the coordination of a neighbourhood bike-about.

Funding for Project LifeCYCLE is provided by the Ministry of Tourism, Culture and Sport. The project partners are CultureLink Settlement and Community Services, Triathlon Ontario, Metrolinx, Toronto Public Health, City of Toronto Cycling Infrastructure, and CAN-BIKE.

Project LifeCYCLE provides a best-practice model that can be followed by other Toronto schools who wish to integrate increased active travel into school culture through improved student knowledge and emphasis on the connections between cycling for transportation, recreation, and sport.



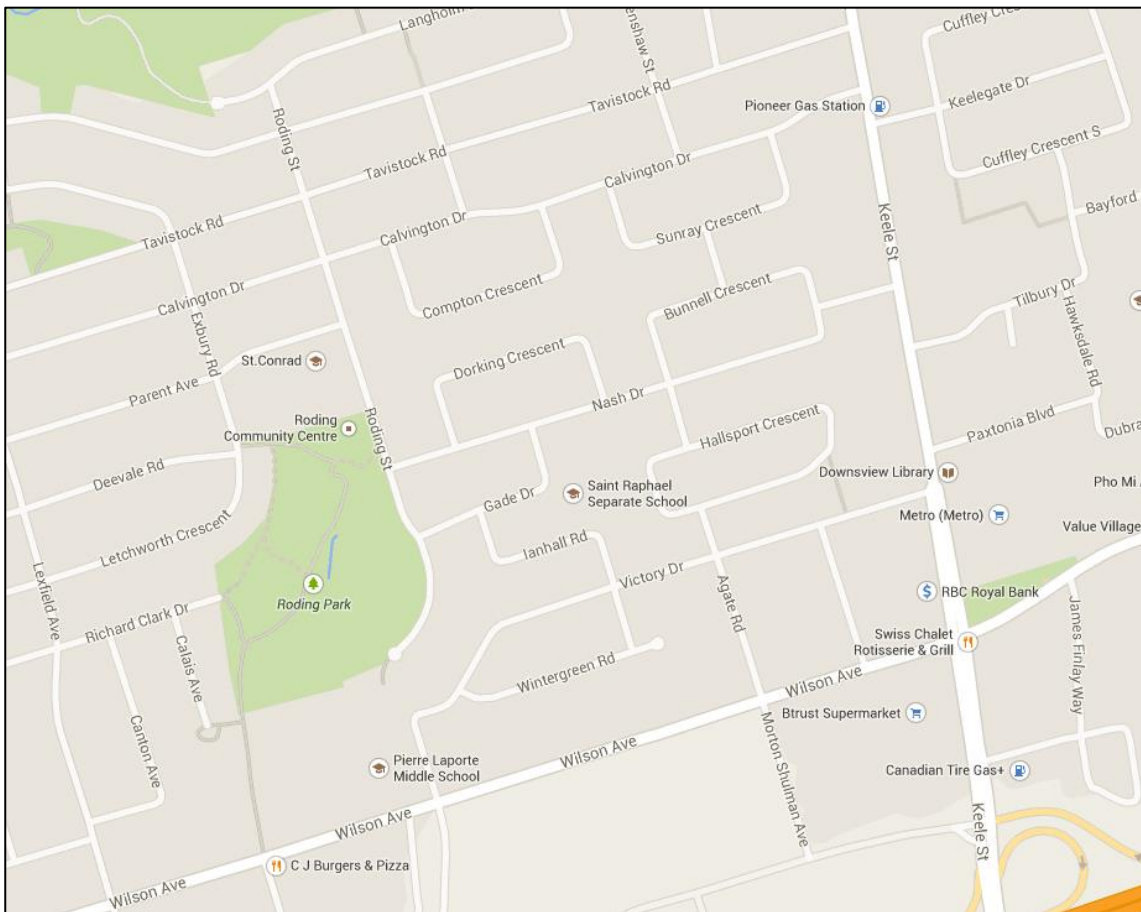
School Profile

School Name	St. Raphael
School Type, e.g. public, separate, private	Catholic Elementary School
Age of School / Year Opened	1962
Name of School Board	Toronto Catholic District School Board
Number of Students	551
Number of Families	410
Grades, e.g. K-6, K-8	K – 8
School Bell Times	8:30 am ; 3:30 pm
Number of Parking Spaces, staff/visitor	
Description of Location, e.g. city centre/suburban/rural	Inner-suburban, Ward 9 York Centre
Is the school in a Neighbourhood Watch or Block Parent Community?	Neighbourhood Watch
% Bussed Students	Approximately 50%
Socio-Economic Description of Families	26% of students live in lower-income households (Provincial average = 16.9%)*
Any local programs e.g. French immersion, fine arts, special needs, before and after-school day care etc.	N/A
High-Level Description of Any Major School Travel Problems e.g. catchment size, driver behaviour, on local or connector road, traffic speed, heavy trucks, bussing wait times	Driver behavior – very congested at school entrances; Safety – strong perception of stranger danger with a few reported incidents of students being followed and/or assaulted; Further details can be found in the <i>Travel Challenges</i> section.
Existing Facilities At School Site, e.g. bike rack/storage, kiss ‘n ride, school bus drop-off zone, adult or student crossing guards, public transit bus stops serving school, transport arrangements to after school programs	School bus drop-off zone Bus to and from daycare centre
Existing Safety Policy & Education, e.g. school safety policy and rules, current safety education programs	Police Officer School Liaison Public health in-school presentations Distribution of public health materials

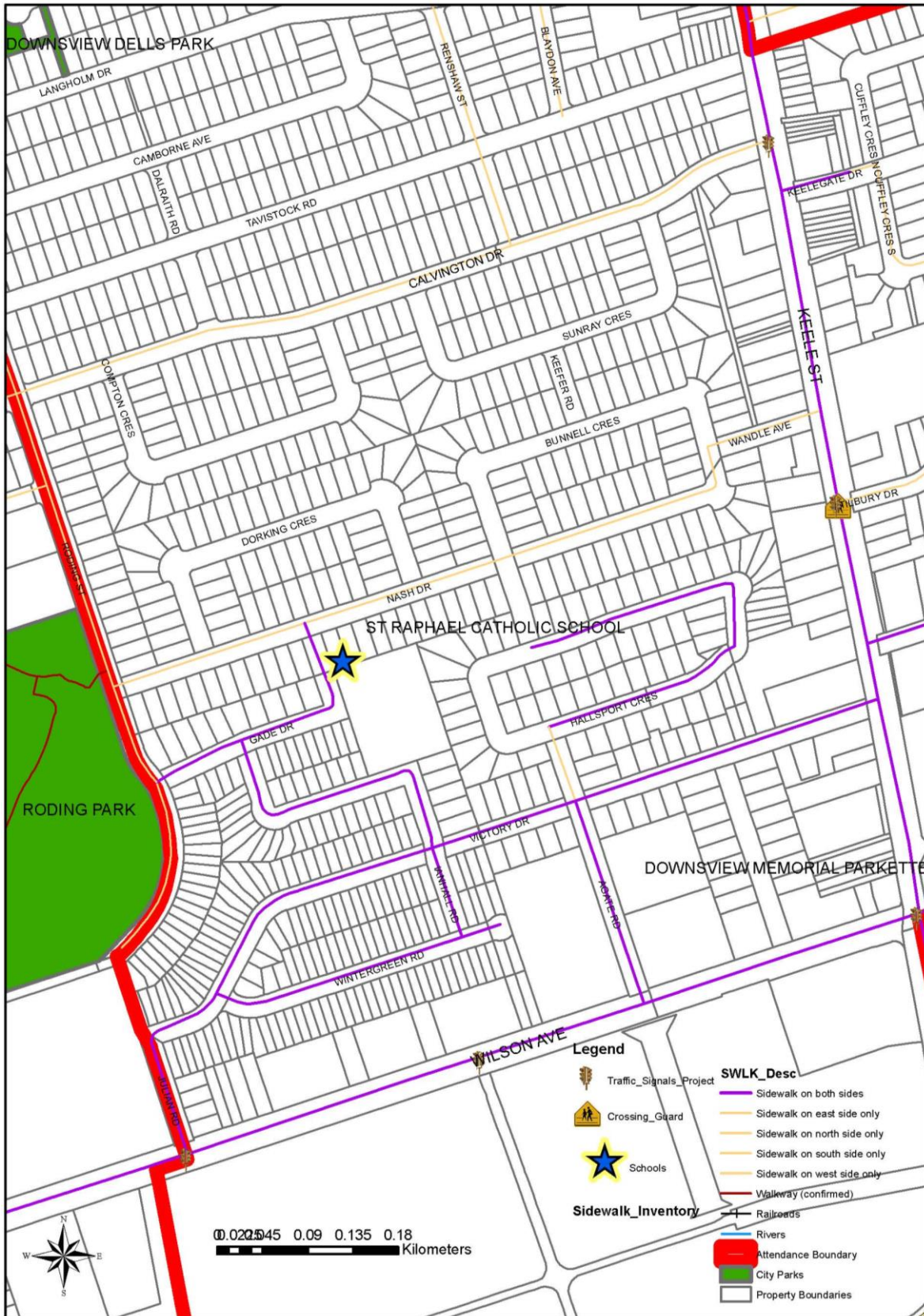
Programs at this school that have goals similar to STP, e.g. environmental, physical activity, mental health	Health Action Team
Types of school/parent committee communications used/available (i.e. newsletter, website, facebook page)	CSPC – parent council Newsletter Website (school website + CSPC website)
Other Information	For 24.4% of students, English is not their first language*

*Statistics from Ministry of Education School Information Finder

Map of area covered by this School Travel Plan



Crossing Guards, Traffic Lights, and Sidewalks



School Travel Planning Goals

Throughout the STP process, stakeholders have identified the following goals for St. Raphael CS:

- Reduce congestion and increase safety at the school site
- Increase active travel on the school journey

Key Goals for this School

Based on the Baseline Classroom and Family Survey findings, this school's key goals in order to assist the health and well-being of our students and families are:

1. Educate students and parents on the importance of active travel along with safety tips, with the help of Toronto Police Services and Toronto Public Health
2. Enhance perception and reality of safety by encouraging self-organized walking groups and getting more eyes on the streets
3. Hold Walk to School Days
4. Set up at least one bicycle rack in a safe location
5. Work towards infrastructure improvements, such as painted crosswalks
6. Combine art with school travel messages, such as a large banner and a street mural
7. Promote 'walk a block' program for families who live too far to walk the whole way

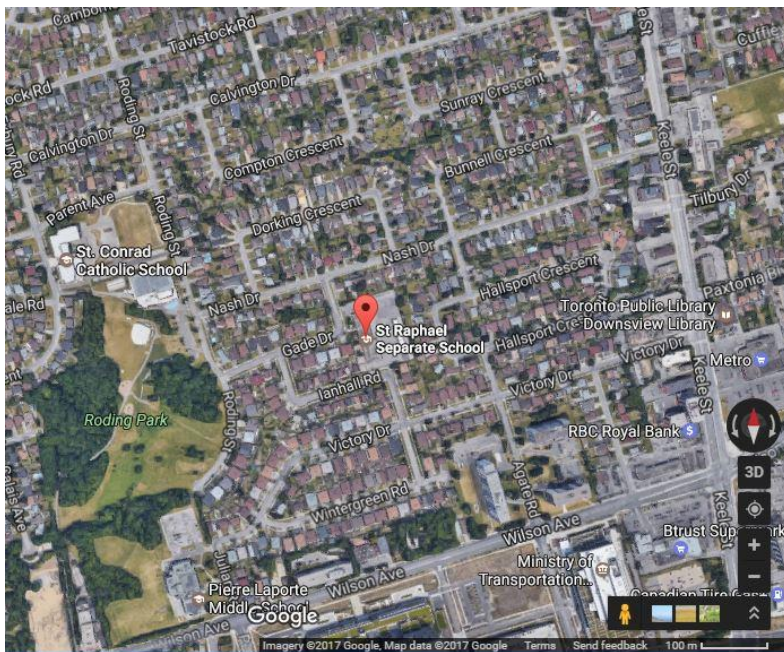
Specific action items are detailed in the Action Plan (see Appendix B).

This section presents the main travel challenges at St. Raphael CS identified by the Walkabout with stakeholders, family surveys with route mapping collected in November 2014, and parent council meetings throughout the year. Please see the full Walkabout report in the Year 1 School Travel Plan for further details and the Action Plan in Appendix B for upcoming and existing actions intended to facilitate improvements.

Many parents drive their children to school. Issues associated with driver behaviour include:

- Double parking
- Parking in the staff parking lot, no parking zone, school bus zone
- Not obeying signs

The following elements create challenges for walking and make driving seem more appealing:



Curvilinear Street Patterns

Curvilinear street patterns increase the walking distance. The winding streets make the routes seem more complicated for walking and may get incentivize residents to drive in order to speed up travel time. In contrast, straight, grid-like streets shorten the distance and creates more direct access to destinations.

There are walking paths cutting through Roding Park. These paths are not well lit.



Photo credit: Katie Wittmann

In addition to physical features of the neighbourhood, the following concerns also pose challenges to walking:

- Personal Safety: concerns about loitering, intimidation, and dangerous situations
- Weather

Year 1 STP Progress 2014–2015




Identifying the issues



Creating an action plan



Distributing transportation Safety materials



ST. RAPHAEL CATHOLIC SCHOOL
3 Gade Drive
Toronto, Ontario
M3M 2K2
416 393-5285
416-393-5127 (Fax)

Newsletter Promotion

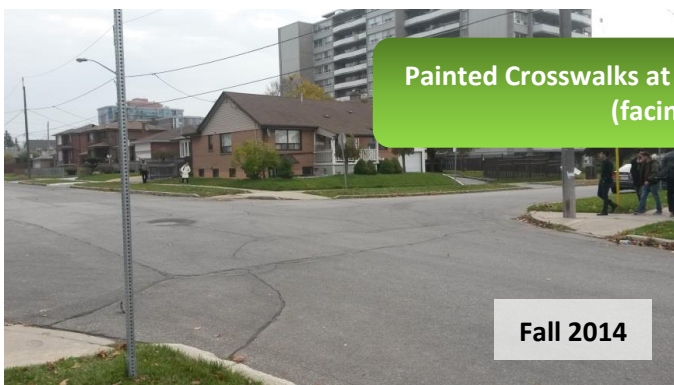
It's Winter! Don't hibernate... walk to school and celebrate! Winter is here! On Friday, January 4th, 2015, why not enjoy a nice walk to school?

- Keep hands and head covered to prevent heat loss.
- On really cold days wear a scarf over your face and mouth.
- Wear warm, waterproof boots.
- Wear a warm coat that deflects the wind.
- Woolen clothing helps to retain the heat.
- Wear clothing or carry knapsacks with reflective material - it's important to be seen.
- If possible, change wet clothes at school - tuck an extra pair of socks and mitts into knapsacks.

Excerpt from Canada Walks

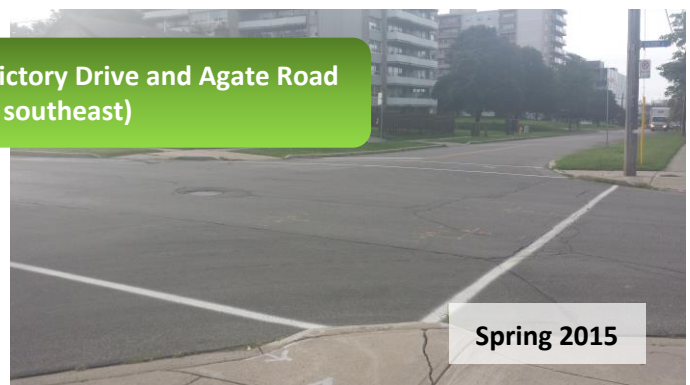


Winter Walk Day 2015



Painted Crosswalks at Victory Drive and Agate Road (facing southeast)

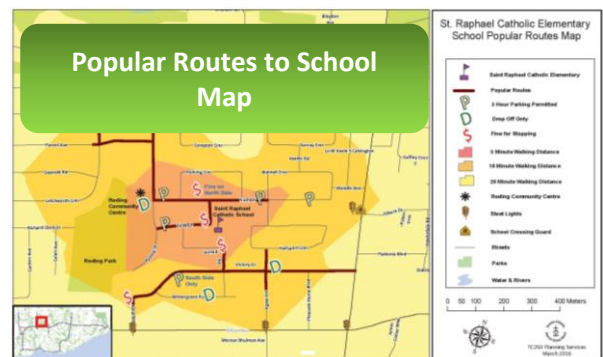
Fall 2014



Spring 2015



Wheeling Safety Presentation by Toronto



Year 2 STP Progress 2015–2016



Year 3 Completed Action Plan Items

IWALK-IWHEEL 2016



News / Toronto

Downsview students see results from walk to school program

Students at St. Raphael Catholic School have seen nearly a 10 per cent jump in kids walking to or from class since last May.

More Media Coverage



Other Completed Action Items

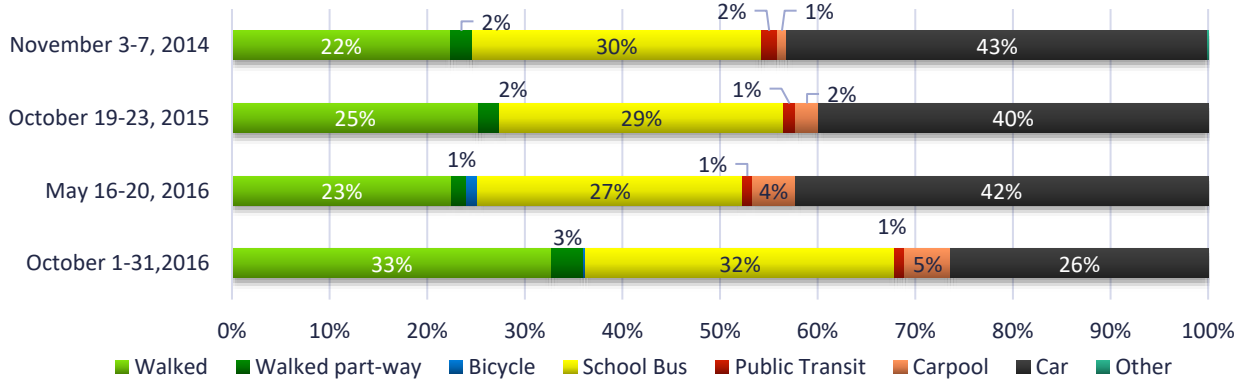
- Students write what they like about their walk to school and put it in a box. The Health Action Team picks one and reads it in the announcements.

COMING SOON

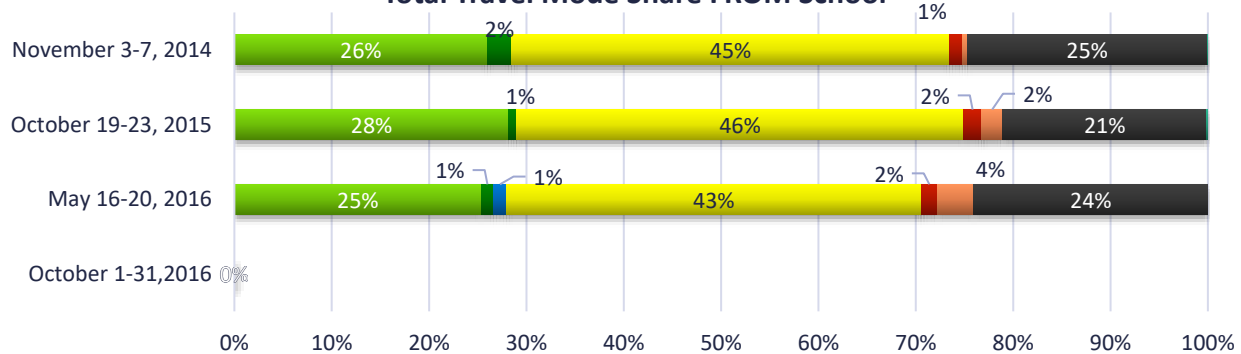
- Luncheon & mini bike rodeo with a cycling athlete
- Bike to School Week 2017

Classroom Surveys

St. Raphael Total Travel Mode Share TO School



St. Raphael Total Travel Mode Share FROM School



Weather Descriptive (temperature, precipitation)

Time Period	Baseline	Follow-up	2nd Follow-up	3rd Follow-up
Date	November 3-7, 2014	October 19-23, 2015	May 16-20, 2016	October 1-31, 2016
Average Number of Responses (TO school)	399	368	271.8	174.35
Average Number of Responses (FROM school)	401	288.8	271.2	0
Monday	12C, dry	5°C, dry	5°C, dry	Sunny, 16°
Tuesday	10C, light rain	overcast, 10°C	dry, overcast (5°)	Sunny, 18°
Wednesday	10C, dry	dry, 12°C	dry (6°)	Partly sunny, 15°
Thursday	10C, dry	dry, 9°C	dry (8°)	Sunny, 16°
Friday	3C, dry	sunny, 5°C	dry (9°)	PA day

NOTE: Grade 5 students were not included in the most recent surveys because of a field trip occurring within the data collection period.

St. Raphael CS collected surveys for trips TO school every day in October 2016. Results show a 10% increase in the percentage of students walking to school and a 16% decrease in the percentage of students being driven to school. The school has also noticed fewer students on the school bus during dry weather as more and more students are walking to/from school.

Benefit-Cost Analysis

By Katie Wittmann

The costs associated with the School Travel Planning project were closely monitored from Baseline (November 2014) to Follow Up 1 (October 2015). The benefits of the project were calculated based on reduced roadway and parking costs, congestion and chauffeur time; environmental health (reduction in greenhouse gas emissions and criteria air contaminants); and physical health from additional walking, cycling, and walking part-way.

Calculation of costs includes people (average hourly rates and in-kind) and materials (meeting facilities and catering, documents, incentives and promotional items, school zone infrastructure, facilitator travel).

Cost of Year 1: \$6,479

Benefit of travel mode shift: \$10,209

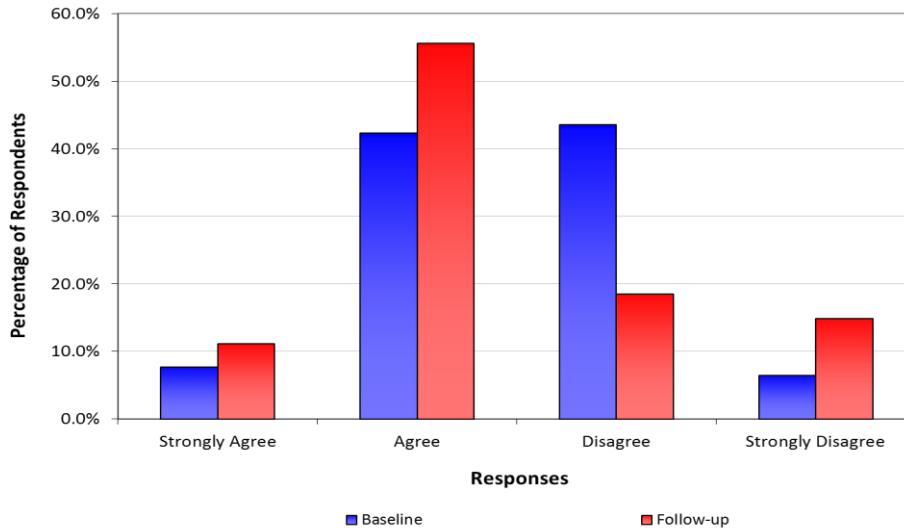


Follow Up Family Survey Findings

By Katie Wittmann

The following graphs provide a snapshot of the follow up family survey findings from June 2016. The baseline results are from November 2014. The sample size for the baseline results (90) is much greater than the follow up (30), as it proved difficult to receive responses during the hectic end of school year season.

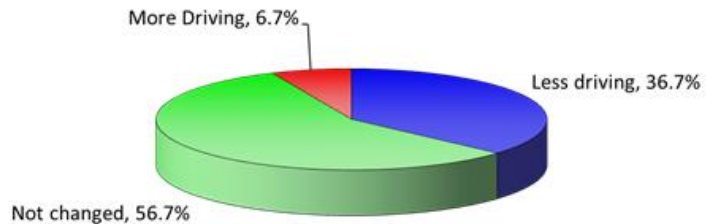
Q6 - Our neighbourhood is safe for children to walk to and from school



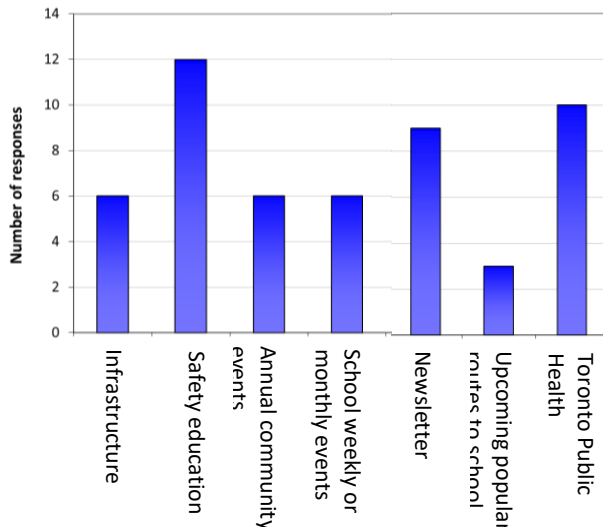
Nonetheless, the results from those who did respond at follow up are very positive. One of the most noticeable changes is in parents' attitudes towards neighbourhood safety. More respondents indicated this time that they agree the neighbourhood is safe for children walking to and from school.

Though more than half of respondents noted that they have not changed their travel habits over the course of the School Travel Planning program, more than 35% say they have! Most of those respondents say they're walking more, and a few said they're cycling more.

Follow-up Only: Q11a - In what ways have your family's school travel habits changed for the TRIP TO SCHOOL, since the School Travel Planning project began?



Follow-up Only: Q14 - Which school travel program activities do you feel have been most effective for your family?



Many of the activities we've been offering at St. Raphael CS have been well received by the follow up respondents. The most effective action identified was safety education (which came in the form of various assemblies and in-class workshops), followed by resources from Toronto Public Health, and the use of the school newsletter to promote events and share information about active travel/school travel planning.

Approximately 90% of respondents indicate that they support ongoing School Travel Planning efforts.



School Travel Plan

Members and Endorsement

Committee members

Members of the School STP Committee

Principal: Sarina Scarmozzino
Vice Principal: Josie Leo-DelDuca
Teacher Representative: Cristian Fazzini
Parents: Jay Saplala
Students: Ryan, Marco, Jacob

Members of the Municipal Stakeholder Committee, and advisory persons

STP Facilitator: Armi De Francia (2016-2017)
Planning Department Representative: Ben Morell (previously Dewan Karim)
Transportation Department Representative: Sidra Rahimzada
School Board Representative: Adam Brutto
Public Health Representative: Wendy Chiu
Toronto Student Transportation Group Representative: Mona Pielot (previously Kevin Hodgkinson)
Elected Councillor: Maria Augimeri
Elected School Board Representative: Patrizia Bottoni
Toronto Police Representatives: Michelle Janse

Endorsement

The School Travel Plan for St. Raphael CS has been endorsed by Principal Sarina Scarmozzino on behalf of the school, and by key representatives of the Municipal Stakeholder Committee.

School Principal: _____

Signature: _____

Date: _____

Lead representative of the
Municipal Stakeholder Committee: _____

Signature: _____

Date: _____



School Travel Plan

Annual Update

Principal

Municipal Lead

End of **Second** Year: June 2016

End of **Third** Year: March 2017

End of **Fourth** Year <Insert date>

End of **Fifth** Year <Insert date>



WALKABOUT

School: St. Raphael, 3 Gade Drive, Toronto, ON

Date: November 6, 2014

Time of Walk and Discussion: 8:00 am – 10:45 am

Participants: Cristian Fazzini (Phys Ed Teacher), Josie Provenzano (Principal), Josephine Leo-DelDuca (Vice Principal), Kevin Hodgkinson (Toronto Student Transportation Group), Melwin Gonsalves (Police Constable, 31 Division School Liaison), Dewan Karim (City Planning, Transportation), Charissa Iogna (City Planning, Transportation), Wendy Chiu (Public Health Nurse), Jennifer McGowan (Metrolinx), Jack Sinopoli (Traffic Operations), Adam Brutto (TCDSB Planning Services), Maria Cianchetti (Parent), Sara Da Costa (Parent), Katie Wittmann (STP Facilitator, Green Communities Canada)

BIKEABOUT

Date: June 8, 2016

Participants

On-Bike + Debrief

Katie Wittmann (School Travel Planning Facilitator), Cristian Fazzini (Teacher), Armi de Francia (Project LifeCYCLE Coordinator), Officer Muto (Toronto Police Service, 31 Division), Officer Sutton (Toronto Police Service, 31 Division), Ryan (Student), Marco (Student), Jacob (Student)

Debrief

Josie Leo-DelDuca (Vice-Principal), Adam Brutto (Supervisor of Planning/Demographer, Toronto Catholic District School Board), Ben Morell (City of Toronto Planning), Mona Pielot (Operations Officer, Toronto Student Transportation Group), Michelle Janse (Toronto Police Service, 31 Division), Jay Saplala (parent)



Action/Initiative	Tasks	Responsibility	Timeframe	Status	Estimated Cost and Source of Funds, or No Cost
Objective 1: To improve the safety of children on the active school journey					
Sidewalks on key streets where there are none	-Resident/public involvement (petition) -Ped Project Unit to review	School to lead petition	Spring 2015		If approved, would get in Transportation Services' Capital Budget for the following year
Crosswalks	-Painted lines indicating crossing	Transportation Services	Already initiated	Some complete Spring 2015	City budget
Change parking on Nash to south side	-Has been tried, residents are opposed. Need to get residents in favour, connect to awareness campaign.	Councillor Augimeri?			City budget
Restrict left turn onto Gade	-Has been tried, could revisit. -Make presentation to council if want to pursue	""	"		City budget
"Faux tickets" + positive notes	-Students to design and distribute tickets for misbehaving drivers, and also positive notes for drivers following rules. (Student council, wearing vests).	Cristian	May 2015 (May is "Good driving habits" month).		Minimal cost of materials supplied by school.
Classroom safety presentations	-School liaison officer can present to students/teachers/neighbours/parents about new initiatives and safety tips -Send home flyers with students.	Melwin	Spring 2015	Wendy gave presentations in 2015 + 2016	No cost.
Reporting license plates	-For repeat offenders, first have teacher on duty address the issue. If it persists, inform principal. Save reporting to police as last resort. -Don't have people take risks to get license plate numbers.	Teachers, school admin, Division 31			No cost.
CAA training program	-School to inform officer if they want to participate. -Requires parent consent. -Education/recruitment sessions. -Mentorship program.	St. Raphael admin to let Michelle know if/when they want to begin program	TBD		No cost.

Action/Initiative	Tasks	Responsibility	Timeframe	Status	Estimated Cost and Source of Funds, or No Cost
Safety materials	-Order more of the active transportation safety materials Wendy brought	Josie Leo-Delduca	Already ordered	Complete 2015	No cost.
Crossing guard	-Request crossing guard at Roding & Nash	School to request, TPS to review	Made formal request Jan 2016	Crossing guard denied by TPS	No cost
Cycling Safety Workshop	Indoor workshop teaching rules of the road, bike safety (ABC check), signaling, safe places to bike, etc.	Katie	Planned March 2016	Delivered April 8 th , 2016	No cost
Objective 2: To raise the awareness of the benefits of active travel					
Street murals	-Suggest to the new School Safety Working Group – have them evaluate, and endorse.		Immediate suggestion, Spring implementation		Cost of paint (?)
School assembly (combine with Jump Rope for Heart)	-Incorporate student presentations re: walking to school and strategies for promoting more walking.	Cristian	March 2015	March 2016	No cost.
Routes mapping/postcards	-Produce maps of the area that highlight the best routes for walking. May also indicate spaces encouraged for parking. The postcard could also include a legend of what signage means.	Stephen, Mona, Katie (in consultation with CSAC, Parking Enforcement Unit, anyone else with insight)	Immediate research and planning	Maps have been printed. To be distributed Fall 2017.	Printing costs – covered by Toronto Student Transportation Group (thank you!)
Student contest for school banner	-Contest for designing “Wall mural” (painted on banner that can hang from school wall). -Students the main painters, teachers and police officers helping.	Cristian (Health Action Team, Me 2 We, Student Council, Eco Team)			Stephen may be able to get us a banner for free. Sarina & Cristian (with support from Katie) to apply for Speak Up grant to cover other costs – would be Gr. 7 & 8 initiative.
Objective 3: To encourage more students to walk or ride to school					
Walking route signage	-Transportation Services will install if 40% walking mode share is reached	Jack	Fall 2015 (use follow-up classroom surveys)	Not yet at 40%	?
Walk a block program	-Identify space for encouraging parents who are driving to park -Send home flyers, make announcements. -For the launch, encourage parents and teachers to participate.	Adam, school admin support	January 2015	April 2016 (with ongoing promotion)	This was combined with the Popular Routes to School Maps

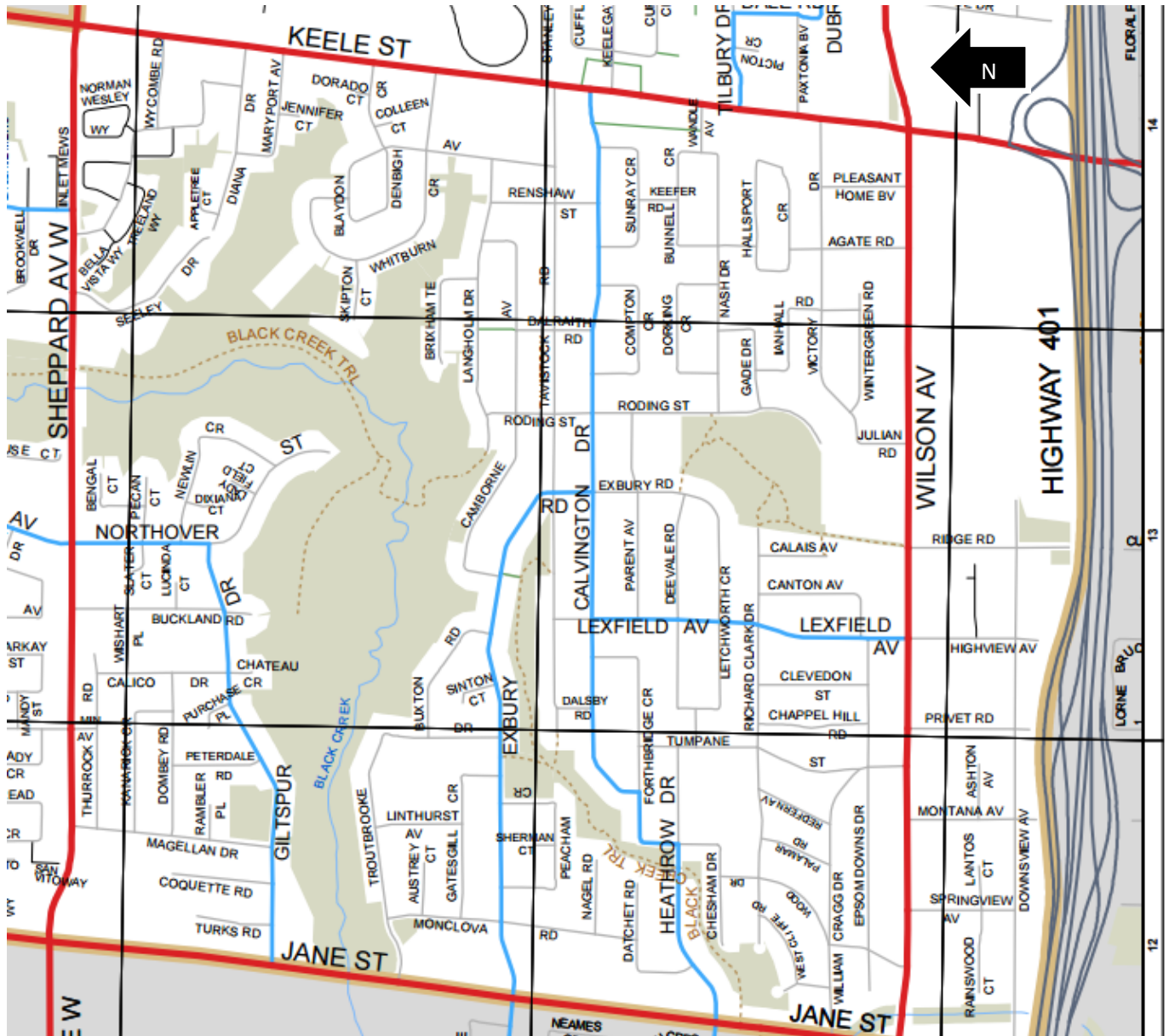
Action/Initiative	Tasks	Responsibility	Timeframe	Status	Estimated Cost and Source of Funds, or No Cost
Walking school bus	-Pilot a walking school bus. -Potential route for pilot is Roding Community Centre to school. -Need to determine organization – enough parent volunteers?		Spring 2015 – connect with walk a block?		?
Steps across Canada map	-Pedometers log # of steps, show the steps travelling across Canada. Could be a competition or used in classes.	Wendy, Cristian	Revisited idea Fall 2015	May 2017 before EQAO?	Wendy gave map to the school. Pedometers purchased.
Bike Rack	-TCDSB can get Pan Am bike rack	Adam	Spring 2015	Delivered Fall 2015. Currently deciding on additional locations.	No cost to school (donated from City)
Cycling athlete presentations	- 30 minute presentations from athletes from Triathlon Ontario on how they got into cycling.	Armi, Triathlon ON, Cycle ON	November 28, 2016	November 28, 2016	Funded by Project LifeCYCLE
Walkpool Promotion	-Help connect families living near each other interested in walking together.	Cristian, support from Katie	Table at parent-teacher interviews on Nov.12, 2015	Table at parent-teacher interviews on Nov.12, 2015	No cost
Sidewalk Chalking	-Art classes will go outside and create designs with chalk on the sidewalk around the school	Art teachers	Spring 2016		Purchase of chalk (\$?)
Bike Rodeo	-Stations outside for learning signals, working on cycling skills, safety	Toronto Police, Public Health, Armi, Ontario Cycling Association	Spring 2017		No cost.
Newsletter articles	-Promotional material to be included in school newsletters, include popular routes map	Sarina, Armi to supply content	Special edition January 2016	Ongoing	No cost.
Walk to School Days	-promote and celebrate walking to school on International Winter Walk Day (each February), International Walk to School month (October), and Spring Walk & Wheel	Cristian with Health Action Team; support from Armi, Toronto Police	Every last Friday of the month	Ongoing, complete for October-November 2016, February 2017	Minimal cost of raffle tickets, donated prizes.

Action/Initiative	Tasks	Responsibility	Timeframe	Status	Estimated Cost and Source of Funds, or No Cost
Objective 4: To monitor effectiveness of initiatives and revise School Travel Plan annually					
Monitor transportation mode	Conduct Follow-up Classroom Survey	Armi	October 2015; May 2016	October 2015; June 2016, November 2016	No cost
Monitor behaviour changes	Conduct Follow-up Family Survey	Armi	June 2016	June 2016, November 2016	No cost
Report on implementation of STP and initiatives	Oversee the implementation of Action Plan items and track the actual versus planned timing and cost of initiatives	Armi	Immediate	Ongoing	No cost
Analyze and report on survey findings	Enter data, produce result graphs	Armi	November 2014; October 2015	December 2014; November 2015; June 2016, March 2017	No cost



Ward 9 Road Classification Map

Use the map below to determine what can be done to your neighbourhood streets. Please see the Guide to Safer Streets near Schools for more information at <http://www.toronto.ca/legdocs/mmis/2016/hl/bgrd/backgroundfile-96414.pdf>



<p>TORONTO Transportation Services Road Classification System Adopted by City Council November 27, 28 and 29, 2012</p> <p>Operational Planning and Policy Unit Transportation Infrastructure Management Section Transportation Services Division</p>	<p>York Centre (9)</p> <p>Road Classification System</p> <ul style="list-style-type: none"> Provincial Expressway Toronto Expressway Major Arterial Minor Arterial Collector Local Ward Boundary 	<p>Physical Features</p> <ul style="list-style-type: none"> River Railway Shoreline Trail Hydro Line Walkways Parks & Recreation Area 	<p>North York District Etobicoke District Toronto and East York District Scarborough District</p> <p>Modified: August 26, 2013 Created: June 18, 2013 Name: RC2013mapbook_20130707</p>
	<p>Other</p> <ul style="list-style-type: none"> Laneway Pending Park Roads Reserved Bus Lane City Boundary 		

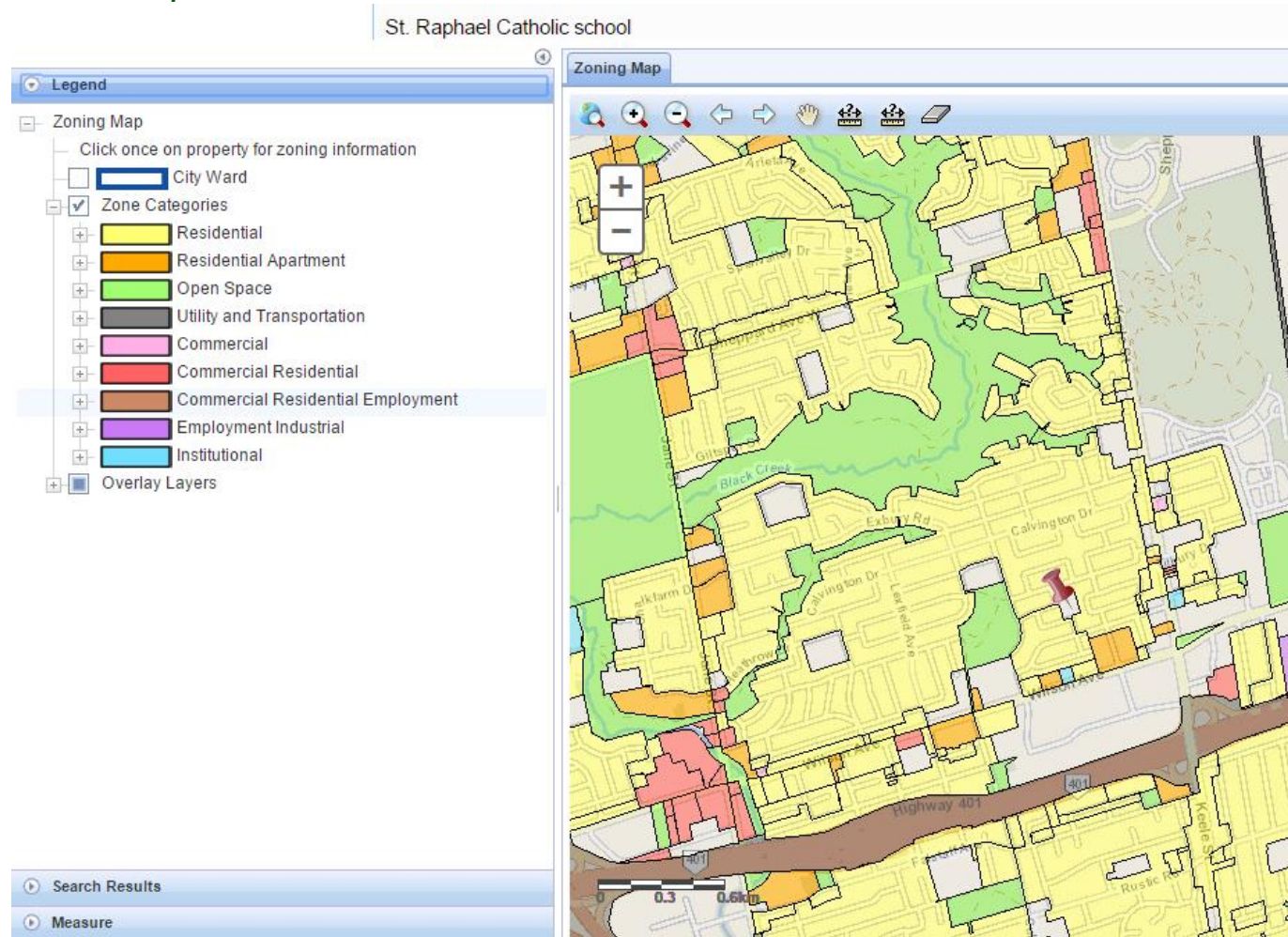
NOTE: This map has been cropped to show the school catchment area.

Source:

<http://www1.toronto.ca/City%20of%20Toronto/Transportation%20Services/Road%20Classification%20System/Files/pdf/2012/Ward%20Maps/ward09.pdf>

www.saferoutestoschool.ca

Land use Map



Source: City of Toronto Zoning By-law 569-2013. Available at http://map.toronto.ca/maps/map.jsp?app=ZBL_CONSULT

Ward 9 Cycling Network Plan



Legend

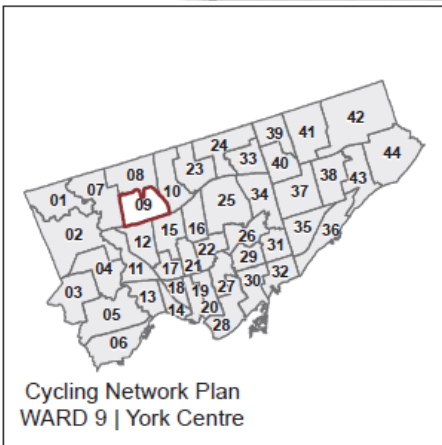
Cycling Network and Trails Plan	Existing Cycling Network
Bike Lanes Cycle Tracks	Bike Lanes Cycle Tracks
Trails Boulevard Trails	Trails Boulevard Trails
Quiet Street Routes	Quiet Street Routes
Tunnels and Bridges	
Major Corridor Studies	

On June 9, 2016 Council Directed that a future study on Jane Street (Steeles to South of 401) may be considered as part of the Cycling Network Plan 2 Year Review Report

0 500 1 000 m

TORONTO IBI VÉLO Québec

Data source: City of Toronto / IBI Group, 2016
 Projection: NAD 1927 MTM 3
 Date: April 2016
 Cartography: Vélo Québec



NOTE: This map has been cropped to show the school catchment area.

Source: http://www1.toronto.ca/City%20of%20Toronto/Transportation%20Services/Cycling/Files/pdf/W/Ward9_TTE-AllWards-2016-08-11.pdf



School Travel Plan

Appendix D: Crossing Guard Request



St. Raphael Catholic School
 3 Gade Drive, Toronto, Ontario M3M 2K2 • (416) 393-5285 • Fax: (416) 393-5127



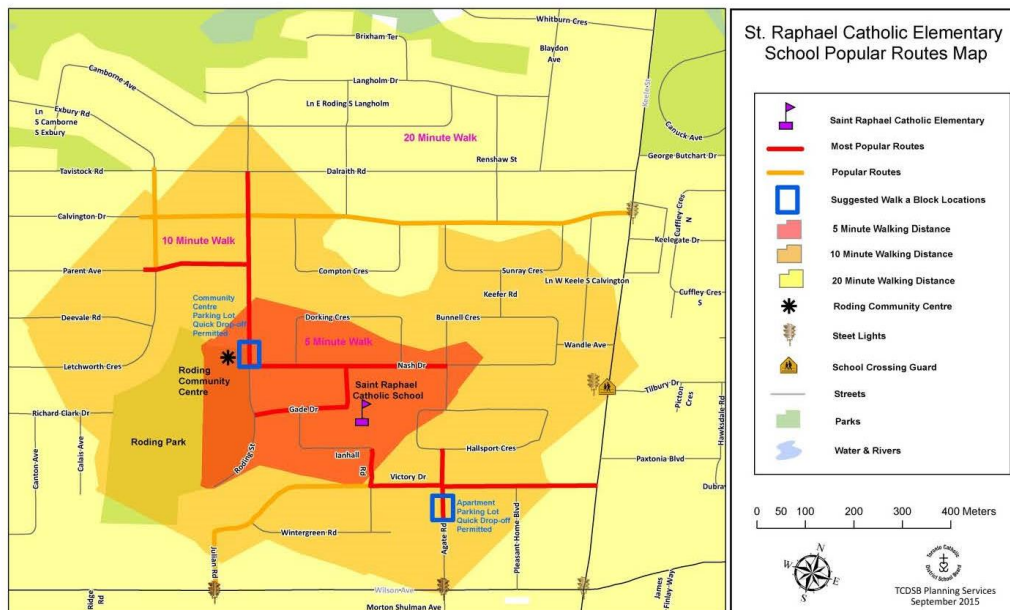
January 8th, 2016

Dear Police Chief Mark Saunders,

At St. Raphael Catholic School (in Police Division 31), we encourage students to walk and cycle to school as much as possible. We are participating in a School Travel Planning program to increase the number of students currently travelling actively, and to help improve the safety of the surrounding streets. One of the initiatives we are working on is "Walk a Block" promotion. For families that live too far to walk the whole way, we're suggesting two nearby parking lots where they can stop and let their children out to finish the trip on foot.

Parents have raised concerns about the safety of the two major crossings that students will make if they're coming from these areas. They are two intersections that already have a high number of students travelling through, and we anticipate even more when our Walk a Block promotion is in full swing. We have a map showing the most popular routes our students travel, and the areas we'll be suggesting drivers stop.

The community has expressed that within the last few months they have witnessed a car accident with a crossing pedestrian and student within the red area. We ask that the intersections of Nash Dr. & Roding St. as well as Agate Rd. & Victory Dr. be examined by your Traffic Survey Team for the placement of crossing guards and other modifications you may recommend.



Sincerely,
 Katie Wittmann, School Travel Planning Facilitator
 Sarina Scarmozzino, Principal/ Josie Leo-DelDuca, Vice-Principal
 Josie Puglisi, School Council Chair



Toronto Police Service

40 College Street, Toronto, Ontario, Canada. M5G 2J3
(416) 808-2222 FAX (416) 808-8202
Website: www.TorontoPolice.on.ca



Mark Saunders
Chief of Police

File Number: CHF LF 0043/2016

February 5, 2016

Katie Wittman

Toronto, Ontario

Re: Request for an Adult School Crossing Guard at Agate Rd and Victory Dr

Dear Katie Wittman

Per your request a Traffic Survey Officer conducted a survey on the location on February 3, 2016 the survey indicates that a school crossing guard is not warranted.

All pedestrians should be encouraged to obey the traffic signals, be aware of and properly react to changing traffic situations. If you would like the community school liaison officer from your local division to attend the school to speak on traffic safety and safe crossing practices, please have the principal contact the School Liaison Officer P.C. Amanda Belanger # 8751 of 31 Division at 416-808-3132.

If you have any questions or concerns regarding this survey, please contact:

P.C. Derrick Martin of Traffic Services – Safety Programs at 416-808-1903.

Yours truly,

Gord Jones
Superintendent
Traffic Services

GJ/dm

To Serve and Protect - Working with the Community



Action Plan Ideas:

Changes to the physical environment:

- Road painting to designate/define space for cars and buses, and as traffic calming.
- Encourage on street parking in a specific place, a block or more away from the school. Some recommend Nash. Could look into changing parking from the north side of Nash to south side, where the sidewalk is.
- Two painted lines for crosswalks – many in the area need this. Identified above.
- Student murals on roadway in front of both entrances and/or hanging banners and artwork (which could reference slowing down and student safety). Nova Scotia examples.
- Longer term: sidewalks on the surrounding streets that do not have any.

Sidewalk Installation Considerations

- Requires extensive community consultation; Residents typically support building a sidewalk on their street though on the opposite side of their property
- Need to survey every resident living on the street of concern and ask if they would support putting sidewalks on one or both sides of the street

Changes to rules/policies:

- Removing left turn option onto Gade Drive off of Nash during morning and afternoon pick up times. This idea was already attempted and did not make it to community council. Need a different approach (i.e. a way that residents can't shut it down). School boards should consider creating traffic management plans, which turning restrictions at targeted intersections around schools at specific times could be part of.
- Use the Active and Safe Routes to School Charter when pushing for changes – more supportive policies likely being developed in the near future by departments such as Transportation in City Planning.
- Jack's team can put up walking route signage if we reach a minimum threshold of students walking (around 45%). (FYI school is currently around 25%).

Education/information:

- Send home the Family Survey (developed by Green Communities Canada) to get more information from parents about their current routes, modes, concerns, etc. We have an online version of this, but can use paper for those unlikely/unable to use online.
- Safe routes mapping exercise (e.g. neighbourhood map that highlights the best streets for walking, could make into postcards to send home). Could also include identifying streets where parents are asked to park, if they must drive.
- Scan and/or order more copies of the safety materials Wendy handed out.
- Record license plates of dangerous/misbehaving drivers and send to police division. Not a long term solution, but may help a bit in the short term.
- Consider use of electronic speed signs (something being piloted at other schools).

Activities/programs:

www.saferoutestoschool.ca

- Walking school buses (good first challenge: route to Roding Community Centre) – need to connect with Community Centre about this, and look into board’s liability policies around walking school buses.
- School assembly.
- Walk a Block program.
- Older students as safety patrollers. CAA training program.
- Student competition/activity for designing safety posters and flyers – these can be sent home to parents. (Have the safety message coming from the students – more powerful).
- Golden shoe award (an old shoe of the principal’s sprayed gold) – competition for walking to school (e.g. class with the highest % of walkers). Link to special event, such as Walking Wednesday.

Ideas raised that require further discussion (some participants in favour, others oppose):

- Redesign of parking lot that includes ‘kiss ‘n ride’.
- Shortening signage for bus loading zone to free up unused space to allow parking.

Resources

Encouragement Events and Resources

IWALK-IWHEEL club: Register for free waterless tattoos, stickers, and club cards

<http://www.saferoutestoschool.ca/iwalk-club>

International Walk/Wheel to School Day (IWALK-IWHEEL, every first Wednesday of October)

<http://saferoutestoschool.ca/international-walk-school-daymonth>

Winter Walk Day (every first Wednesday of February) <http://saferoutestoschool.ca/winter-walk-day>

Bike to School Week (last week of May/first week of June) bikemonth.ca/biketoschool

Teaching Tools

Bikewalkroll (an online survey tool that gives scores based on the use of active school travel)

<http://bikewalkroll.org/>

CAN-BIKE Videos (teaches cycling safety and handling) <http://canbikecanada.ca/videos/>

Tips for organizing successful Bike Rodeos

<http://www.saferoutestoschool.ca/sites/default/files/Tips%20for%20Organizing%20Successful%20Bike%20Rodeos%20REVISED2.pdf>

City of Toronto Projects and Documents

City Cycling Network Plan

<http://www1.toronto.ca/wps/portal/contentonly?vgnextoid=981f88b7b32e9410VgnVCM10000071d60f89RCRD>

Vision Zero

<https://www1.toronto.ca/City%20of%20Toronto/Transportation%20Services/VisionZero/Links/2017%20Vision%20Zero%20Road%20Safety%20Plan.pdf>

Guide to Safer Streets near Schools <http://www.toronto.ca/legdocs/mmis/2016/hl/bgrd/backgroundfile-96414.pdf>

Traffic Calming Guide for Toronto <http://www.toronto.ca/legdocs/mmis/2016/pw/bgrd/backgroundfile-94207.pdf>

Watch your Speed Program

<http://www1.toronto.ca/wps/portal/contentonly?vgnextoid=70be4681d4002410VgnVCM10000071d60f89RCRD>